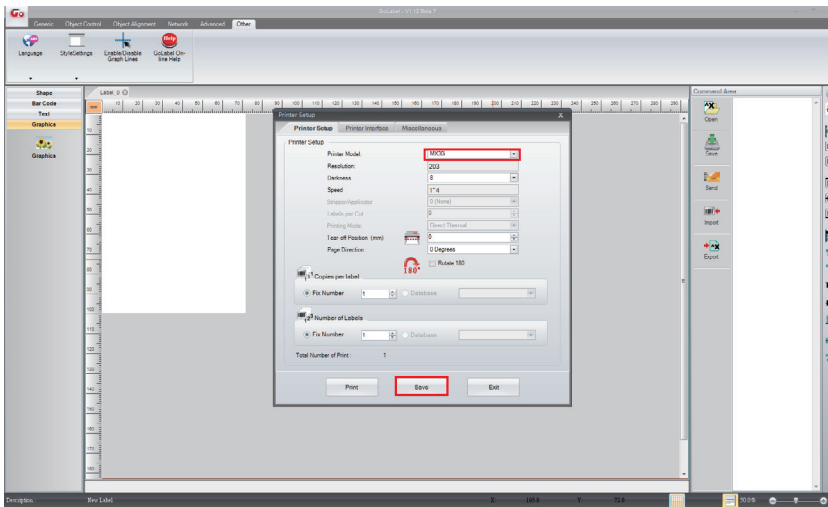


# Appendix

## MX 30/30i WiFi Setting

### 1.2 Set up MX 30/30i Wireless Network through Godex WiFi tool

- Step 1. Connect MX 30/30i and computer by USB cable
- Step 2. Turn on MX 30/30i
- Step 3. Start Golabel
- Step 4. Select printer model to MX30/30i (see the screenshot below)



- Step 5. Click "WiFi Setting" icon (see the screenshot below)

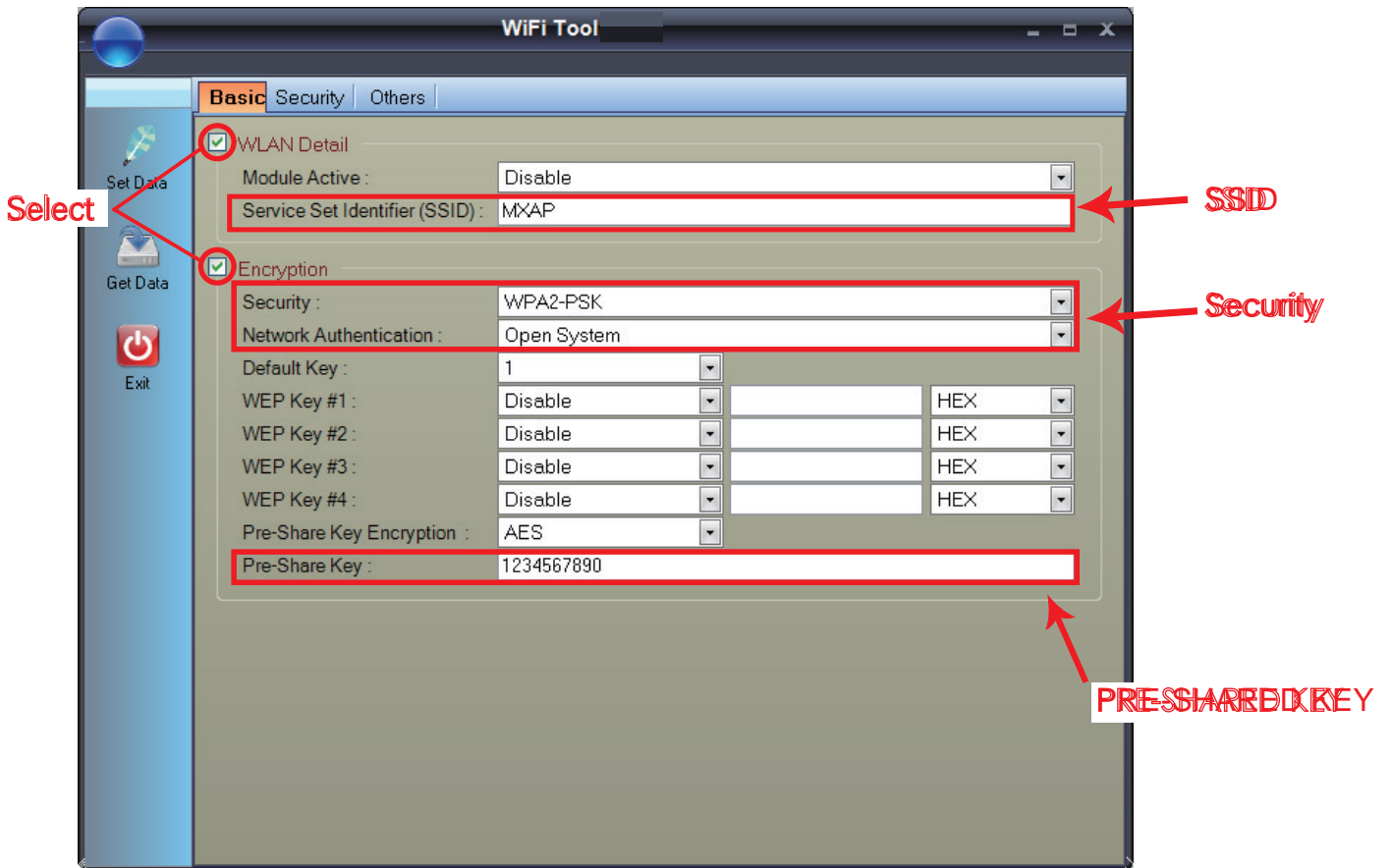


# Appendix

## MX 30/30i WiFi Setting

Step 6. Input parameter s of wireless access point (see the screenshot below)

Step 7. Click “Set Data” icon, and the printer will reboot



PS : If printer doesn't reboot after a few seconds and 3 beeps are not heard, please repeat the steps from chapter 1.2)

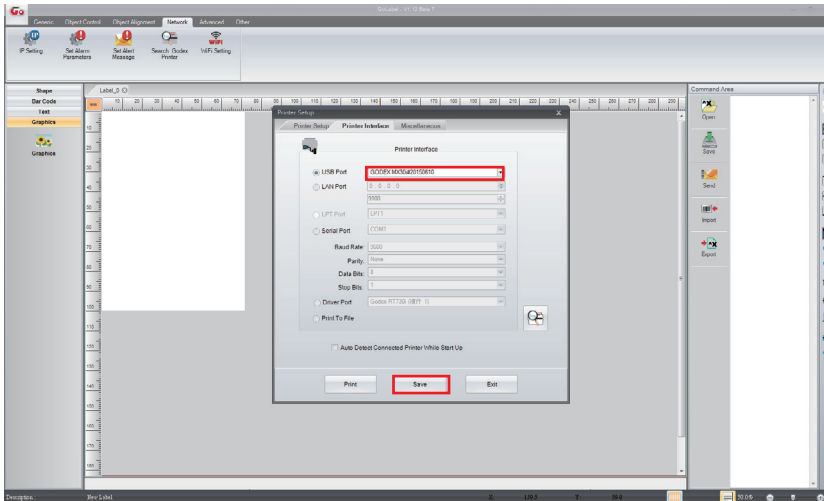
# Appendix

## MX 30/30i WiFi Setting

### 1.3 Activate DHCP function for MX30/30i

#### 1. First of all, configure DHCP function through USB

Steps : Click “Generic” → Click “Printer Setup” → Select “USB port/GoDEX MX30/30i” → Click “Save ”



#### 2. Obtain the printer IP address through WiFi Setting (Please refer to the screenshot below)

